



# 1250

23RD STREET NW  
WASHINGTON DC

## 32,777 SF

High-End Office Space  
In the West End



1250

Knowledge  
Perseverance  
Integrity

**Cambridge**  
Property Group LLC

# PROPERTY OVERVIEW



**1250 23rd Street** is a high-end office property that occupies the first five floors of a prominent nine story building in the thriving West End of Northwest Washington, DC. The property is proximate to numerous walkable restaurants, hotels, and retail amenities. It is also conveniently situated less than a mile from both Foggy Bottom-GWU (orange/silver/blue lines) and Dupont Circle (red line) Metro stations. Newly delivered building enhancements include a full lobby renovation, elevator cab restoration, and common area upgrades. Tenant wellness improvements include bipolar ionization HVAC modifications and Merv-13 filtration for better air quality. Additional features include an on-site fitness facility and a lobby attendant.



Full Lobby  
Renovation



Elevator Cab  
Restoration



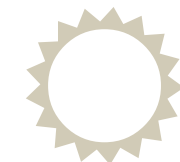
Common Area  
Upgrades



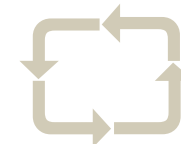
High-End  
Spec Suite



Efficient  
Layouts



Abundant  
Natural Light



Improved  
Air Quality



On-Site  
Fitness Center



Lobby  
Attendant



Convenient  
Commuter Access



98  
Exceptional  
Walk Score



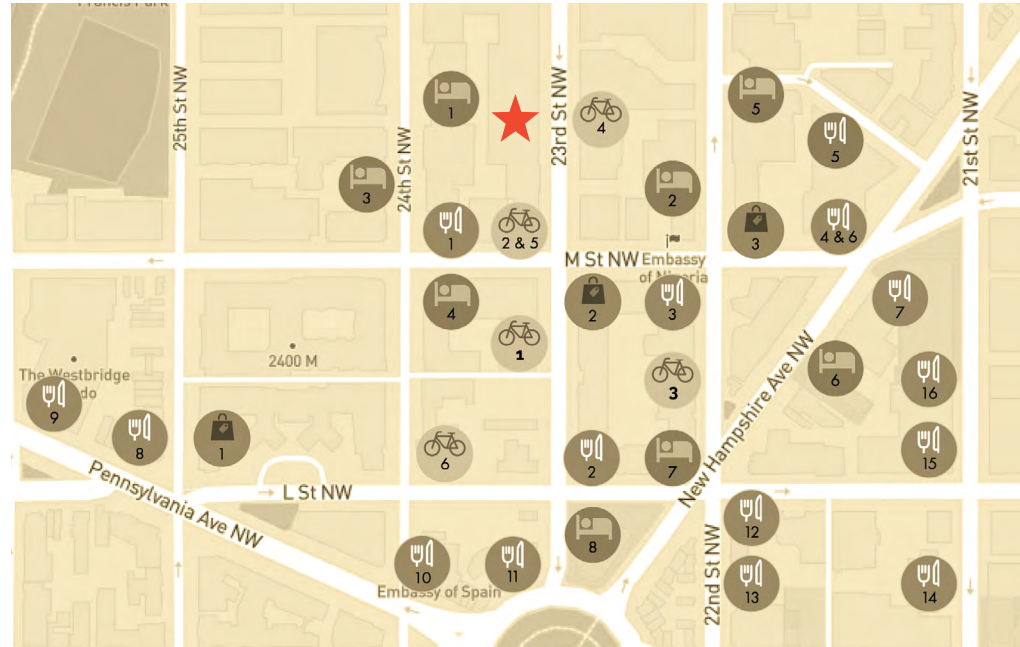
Bountiful Area  
Amenities





Full Lobby Renovation

## AMENITY RICH LOCATION



**1250 23rd Street** is submerged in the heart of the West End between Georgetown, the Golden Triangle, and the office driven Central Business District of the nation's capital. Nestled among a hub of international embassies, the property's premier location offers tenants a unique collection of prestigious dining, casual restaurants, trendy retail, and a large concentration of high-end hospitality accommodations. With immediate access to a broad network of walkable thoroughfares, tenants enjoy full immersion in a highly amenitized environment.



### Shop

1. Trader Joe's
2. CVS
3. Walgreens



### Play

1. Urban Boxing
2. Soulcycle
3. Equinox Sports Club
4. Solidcore
5. Landmark Theaters
6. West End Library



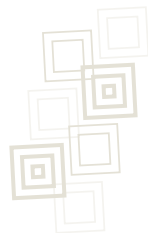
### Eat

1. Blue Duck Tavern
2. Ris
3. Sweetgreen
4. Starbucks
5. Grillfish
6. Meiwah
7. Potbelly
8. Subway
9. One Fish, Two Fish
10. Marcel's
12. Char Bar
13. Starbucks
14. Bobby's Burger Palace
15. Bourbon Coffee
16. Soi 8



### Stay

1. Park Hyatt
2. Hilton Garden Inn
3. Fairmont
4. The Westin
5. Washington Marriott
6. The Wink
7. The Ritz-Carlton
8. One Washington Circle





1250

3 2 , 7 7 7 S F A V A I L A B L E



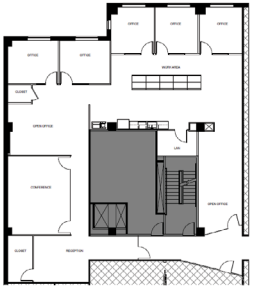
**1250 23rd Street** currently offers over 41,000 SF of prime office space. Newly renovated common areas and elevator lobbies have been delivered to the 2nd and 4th floors. Available suites typically feature a mix of open/office throughout, contemporary glass concepts, high-end finishes, prominent elevator exposure, exceptional window lines, abundant natural light, and views overlooking 23rd Street.

[Spec Suite Virtual Tour](#)



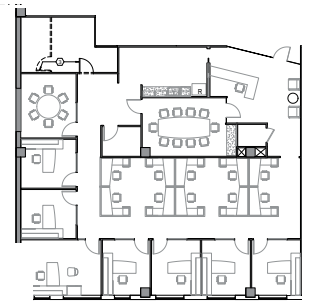
Spec Suite 420  
**3,355 SF**

[View Floor Plan](#)



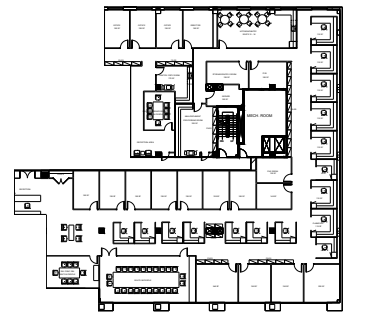
Suite 410  
**4,066 SF**

[View Floor Plan](#)



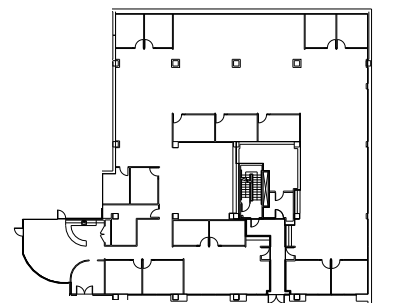
Suite 250  
**13,290 SF**

[View Floor Plan](#)



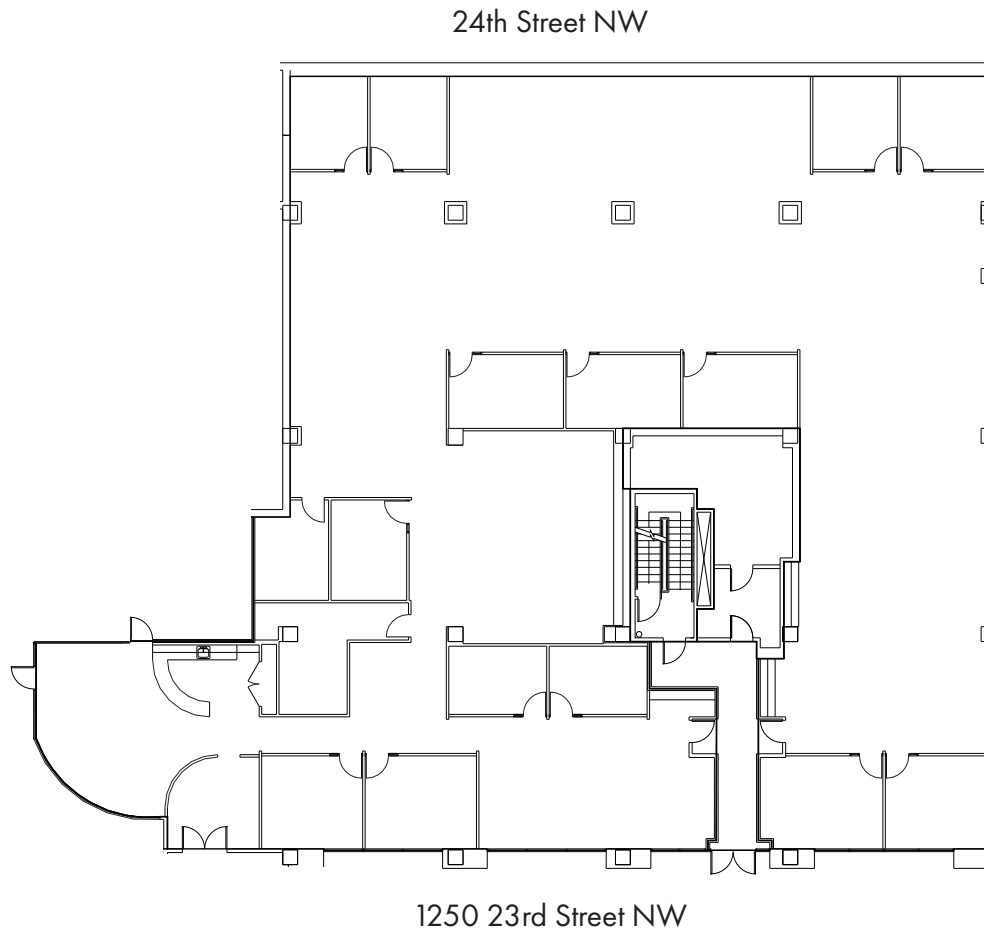
Suite LL  
**12,066 SF**

[View Floor Plan](#)



**1250**  
23RD STREET NW  
WASHINGTON DC

**Suite LL**  
12,066 SF



**SCAN**  
For Property Website

Knowledge  
Perseverance  
Integrity

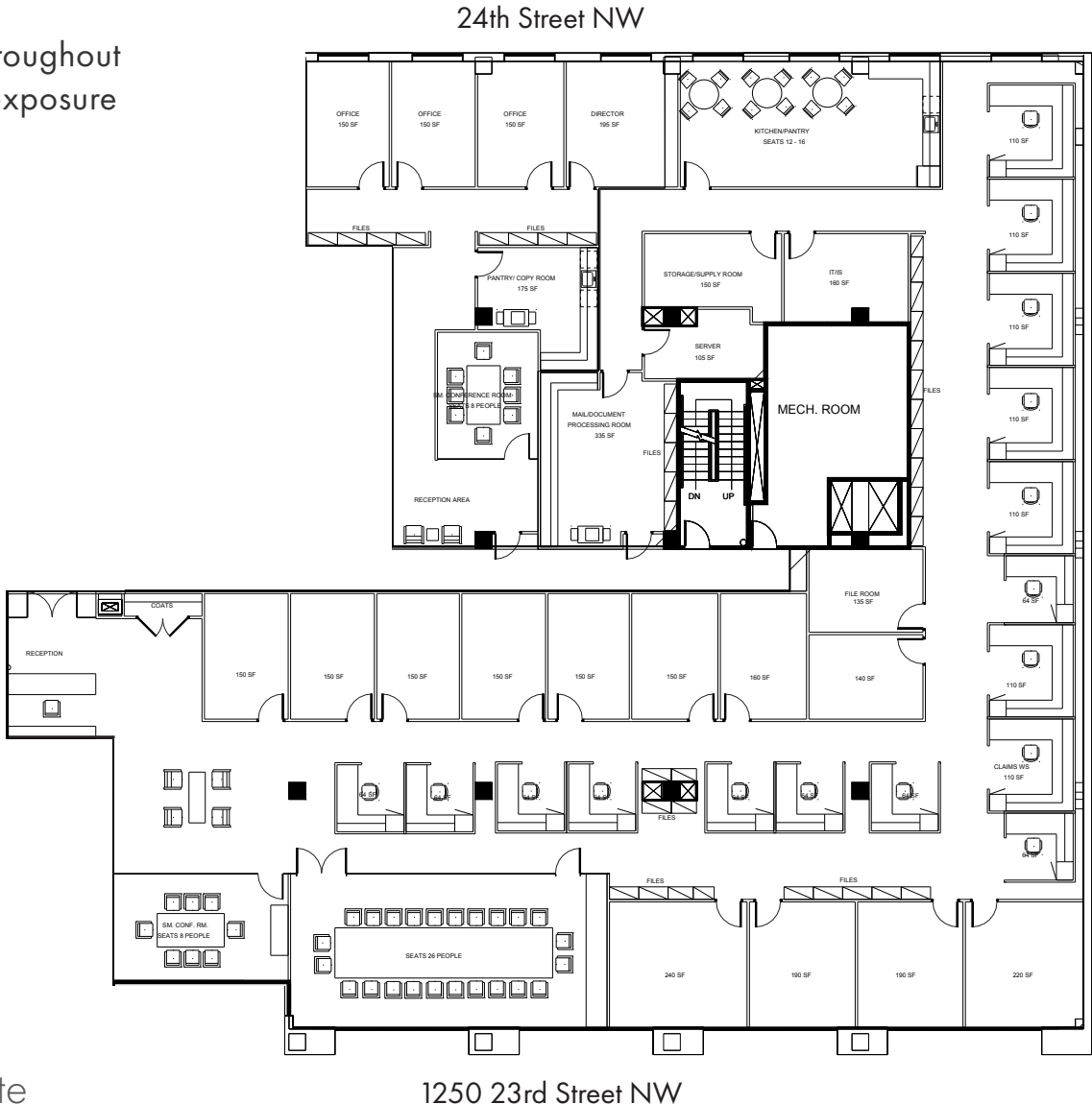
**Cambridge**  
Property Group LLC

# 1250

23RD STREET NW  
WASHINGTON DC

**Suite 250**  
13,290 SF

- High-end finishes throughout
- Prominent elevator exposure
- 23rd Street frontage
- Mix of open/office

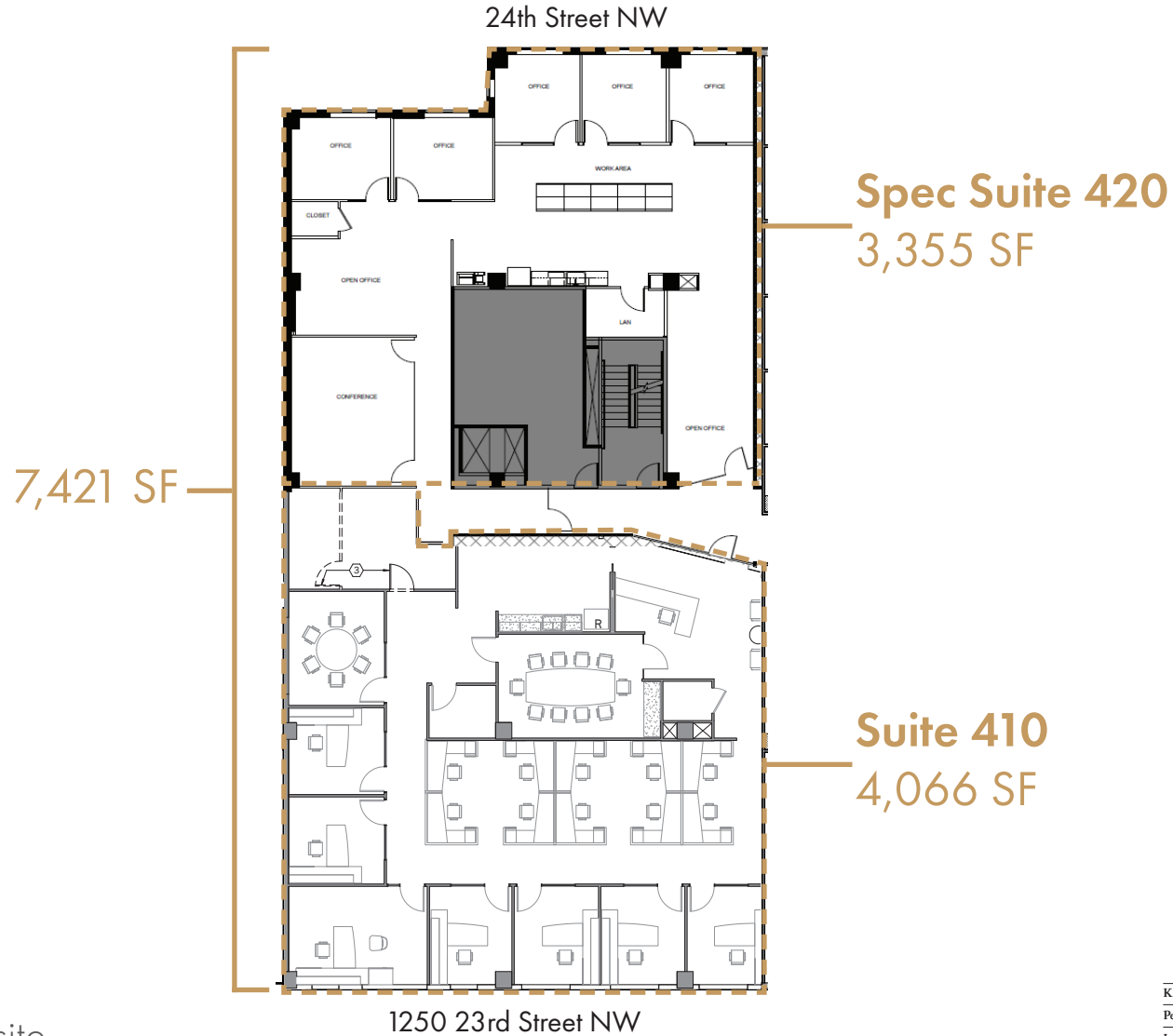


**SCAN**  
For Property Website



**1250**  
23RD STREET NW  
WASHINGTON DC

**Suites 410/420**  
3,355-7,421 SF



**SCAN**

For Property Website

Knowledge  
Perseverance  
Integrity

**Cambridge**  
Property Group LLC

# 1250

23RD STREET NW  
WASHINGTON DC

Suite 410  
4,066 SF



1250 23rd Street NW



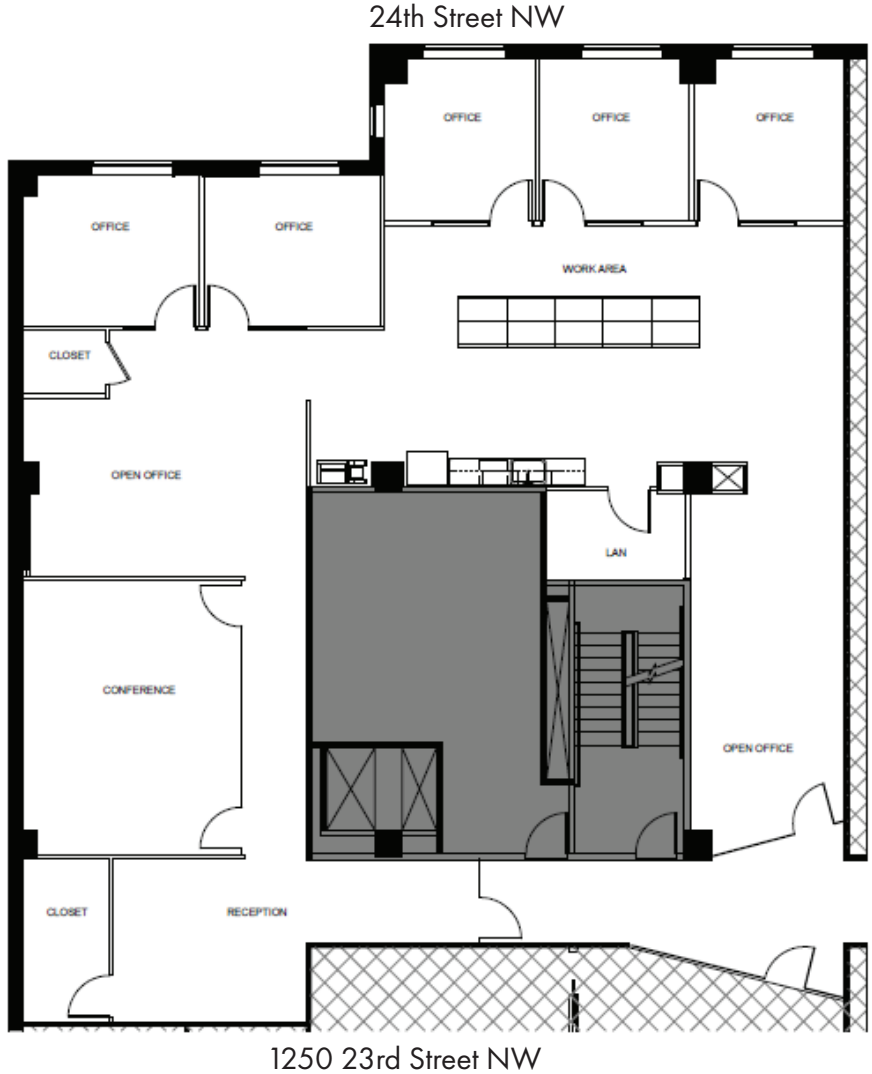
**SCAN**  
For Property Website

Knowledge  
Perseverance  
Integrity

**Cambridge**  
Property Group LLC

**1250**  
23RD STREET NW  
WASHINGTON DC

**Spec Suite 420**  
3,355 SF



**SCAN**

For Virtual Tour



**SCAN**

For Property Website

**LEASING**

**703.925.5213**

**leasing@cambridgeus.com**

Benjamin R. Eldridge Jr.

Andrew J. Czekaj III

Katherine C. Freehof

**1250**

23RD STREET NW  
WASHINGTON DC

**SCAN**

For Property Website



Knowledge  
Perseverance  
Integrity

**Cambridge**  
Property Group LLC