



# 15 THINGS YOU NEED TO KNOW THIS MORNING

Dec 03, 2015 | Bisnow

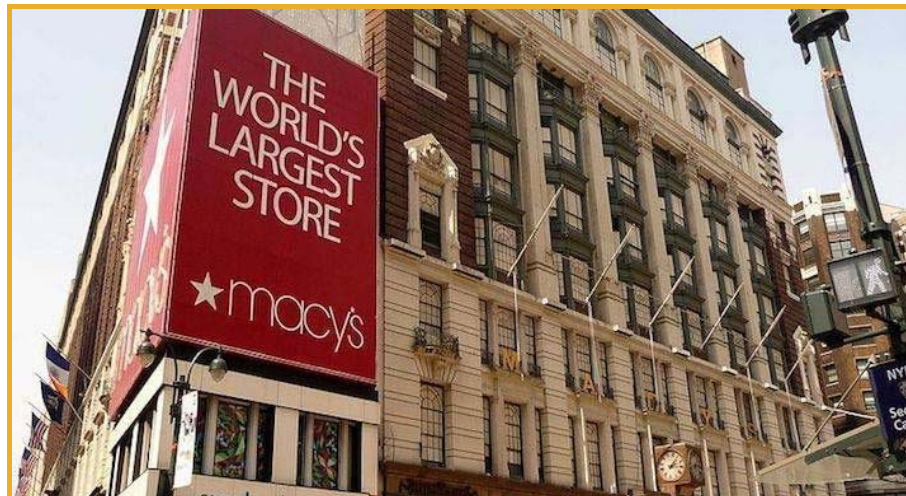
Facebook

Twitter

LinkedIn

Email

Print





## How Much Real Estate Does Macy's Own?

Macy's real estate holdings are valued at **\$21B** with its **three most valuable flagship stores** (NYC, SF and Chicago) worth **\$7B** combined. Click [here](#) to see the whole story.

## 15 OTHER THINGS YOU NEED TO KNOW THIS MORNING

Cambridge Closes Sales of West End, Tysons Office Buildings

Washington REIT Signs 137K SF Anchor Tenant at Silverline Center

Oliver Carr Jr Talks DC Real Estate, Innovations and Advice

Shirlington Becomes Viable Non-Metro Option

**The NYU School of Professional Studies Schack Institute of Real Estate – M.S. in Real Estate. Learn from industry veterans in the heart of NYC.**

The New York Times' Take on Shaw

NoVa Sees Incremental Gains, Recipe for Future Growth

Foulger-Pratt, Willco Break Ground on Newly Named Core in Silver Spring

Loudoun Wary of Lower-Cost Route 28 Hotel Pitch

**Looking to save energy and costs for your Maryland business? Washington Gas offers rebates for eligible natural gas equipment**

Clarksburg Comsat Campus Sells for \$11.5M

ANC Supports Workforce Housing, Net-Zero Proposals for Mount Vernon Triangle Site

Bethesda's Apex Building May Become Three High Rise Buildings and a Purple Line Station



# CAMBRIDGE CLOSES SALES OF WEST END, TYSONS OFFICE BUILDINGS

Dec 02, 2015 | Chris Feery, Bisnow National



Facebook



Twitter



LinkedIn



Email



Print



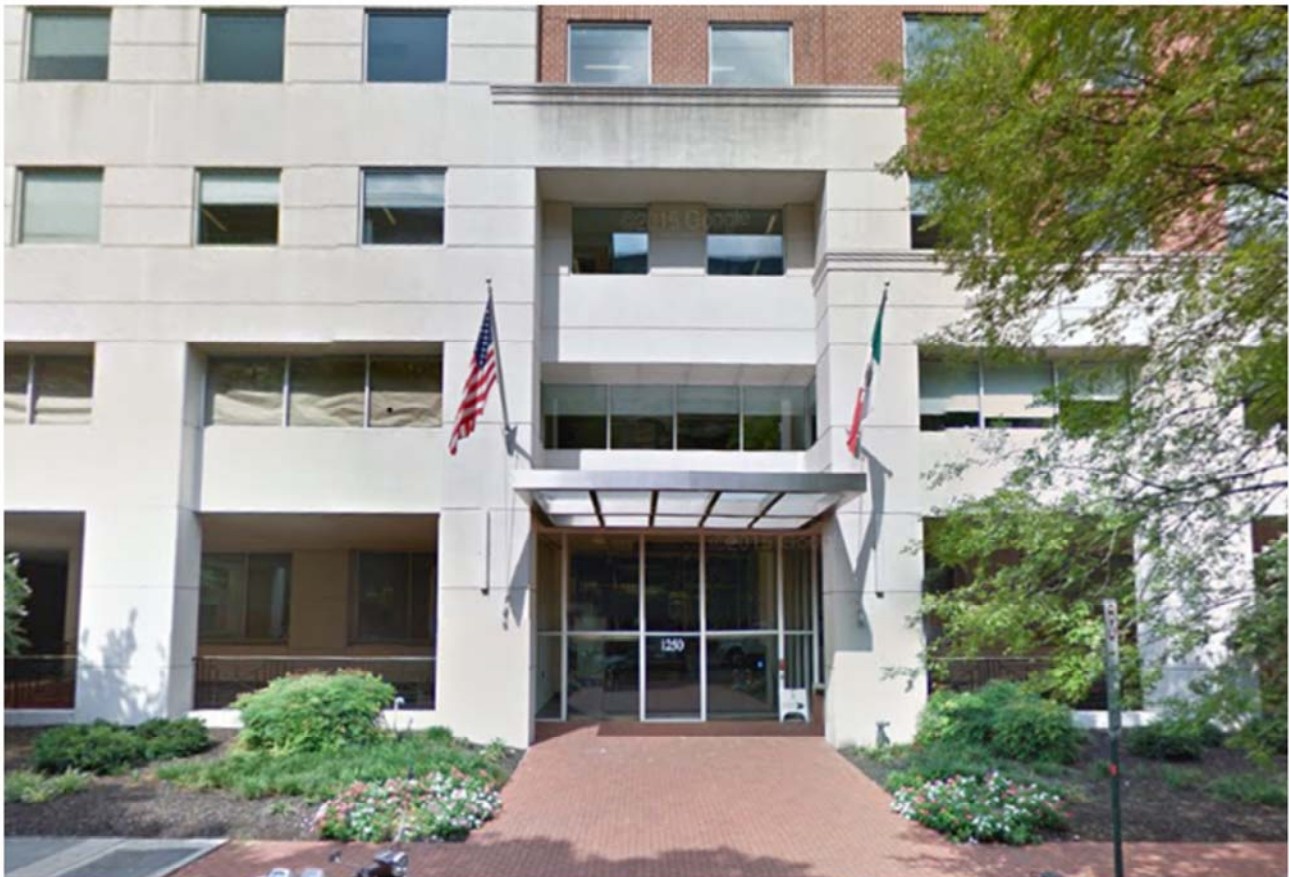
Cambridge Property Group has closed **two office sales**—one in Tysons and another in the West End—in the last two days.





building, is at **1760 Old Meadow Rd** and has **53k SF available** for lease, more than half the building. Cambridge has been retained to **manage and lease** the property, which will receive comprehensive common area upgrades and be renamed "**Cambridge Metro Overlook.**"

The Harrison was developed in **1999** and is just a short walk away from the **Metrorail Silver Line**. The building features a **two-story marble lobby** and a five-level structured parking garage with **covered breezeway**.



Cambridge also represented a **JV** of Hartford Investment Management Co and Galaxy Investments, in their acquisition of **1250 23rd St NW** in the **West End** submarket of DC.

The **128k SF mixed-use** property was purchased from Westport Capital Partners for **\$64M**. The building is **100% leased** and in the heart of the West End, in **proximity** to the Central Business District and Georgetown. Cambridge



**Andrew J. Czekaj**, managing member of Galaxy, described the transaction as “a **rare opportunity** in Washington, DC, to purchase a **well-leased project**, with credit tenancy, which also provided **strong double-digit returns** on our investments. We will continue to **aggressively pursue** similar transactions in the Washington, **DC, metro area.**”

1250 23rd St was **built in 1989 and renovated in 2010**, which included a **new fitness center**, new restrooms and common areas, and **upgrades and replacements** of the building systems.

See Also: [7 Ways DC Real Estate Gives Back](#)

Related Topics: [West End](#), [Tysons Corner](#), [Cambridge Realty Capital](#), [Galaxy Metro LLC](#), [Andrew J. Czekaj](#), [Hartford Investment Management Company](#)



Facebook



Twitter



LinkedIn



Email



Print

## RELATED STORIES



**Columbia Place on Track for \$41M in EB-5 Capital by December**



**Still Likable After All These Years**



**How DC Real Estate Gives Back**

